

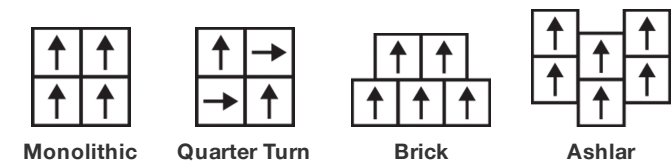
Sculpt Tile

Type De Produit	Dalles De Moquette
Collection	Rewoven
Numéro Du Style	5T007
Construction	Tufté Bouclé Rasé Structuré à Motif
Fibre	Ecosolution Q100™ Nylon
Méthode De Coloration	100% Solution Teinte
Sous-couche Primaire	Synthétique
Sous-couche Secondaire	Dalle Ecoworx®
Traitements Protecteurs	SSP® Shaw Protection Du Sol
Adhésif Recommandé	LokDots, 3000 Carpet Tile 1 Gallon, 4151 Multi-Use Carpet Tile 4 Gallon, 5000 Carpet Tile 1 Gallon, LokWorx Adhesive Tabs, 3800 Indoor Outdoor Carpet Tile 4 Gallon, 5000 Carpet Tile 4 Gallon or 3000 Carpet Tile 4 Gallon

	u.s.	metric
Dimensions Du Produit	24 in x 24 in	61 cm x 61 cm
Surface Par Carton	48 ft²	4.46 m²
Pièces Par Carton	12 pcs	
Jauge	1/10 in	39.4 per 10 cm
Points	13.0 per in	51.0 per 10 cm
Densité Moyenne	5581 oz/yd³	0.206 g/cm³
Kilotex		11.84
Epaisseur Du Velours	0.249 in	6.32 mm
Poids Tufté	20 oz/yd²	678.1 g/m²



Méthodes d'Installation Conseillées



Données + Tests Et Essai

Panneau Rayonnant (Astm E648)	Class I
Nbs Smoke	Less Than 450
Propension Electrostatique	Less Than 3.5 kv
Label Cri Green Label Plus (Glp)	GLP9968
Test d'Inflammabilité	Pass*
Ada Compliance	>0.6, Meets the recommended static coefficient of friction for ADA walking surfaces and accessible routes***

Test Reports may be included or listed by the manufacturing/inventory style number as opposed to the noted selling style number.

Garanties

Durée De Vie Commerciale Limitée

Coordination Des Produits

Carpet Tile: **Trace Tile, Align Tile, Sculpt Loop Tile**  
Broadloom: **Layer, Dimension, Contour, Outline**

Attributs + Certifications

Certifications Below Apply Exclusively To The Carpet Tile Rug Itself And Not The Lokworx Tabs Adhesive

Certification Cradle to Cradle™ (C2C)  
Déclaration sanitaire de produit (HPD)  
Déclaration environnementale de produit (EPD)

Embodied Carbon (Cradle to Gate)  
Life-Cycle Carbon Emissions  
Living Building Challenge (LBC)  
Déclarer  
NSF 140  
CRI Green Label Plus (GLP)  
Singapore Green Label  
Label CE (EN 14041)  
garantie environnementale

contenu recyclé total  
emballage du produit  
pays d'origine

Silver Level (Version 4.0)  
Transparence 1 000 ppm  
Certifié Par Un Organisme Tiers Conformément Aux Normes ISO14044, ISO 14025 & EN15804  
4.73 kg CO<sub>2</sub>/m<sup>2</sup>  
Carbon Neutral  
Free of Red List Chemicals  
LBC Compliant  
or  
GLP9968  
Certifié  
Certifié Par Un Organisme Tiers  
Re[turn] Reclamation Program\* | Through Our Environmental Guarantee, Shaw Pledges to Transport And Recycle Any Ecoworx Carpet.  
60% (Pre-Consumer 60% | Post-Consumer 0%)  
100% Recyclable  
USA

Contribution À La Certification Leed

MR Credit: Building Product Disclosure and Optimisation  
Environmental Product Declarations - Option 1: Environmental Product Declaration (EPD)  
MR Credit: Building Product Disclosure and Optimisation  
Material Ingredients - Option 1: Material Ingredient Reporting  
MR Credit: Building Product Disclosure and Optimisation  
Material Ingredients - Option 2: Material Ingredient Optimization  
MR Credit: Building Product Disclosure and Optimization  
Sourcing of Raw Materials - Option 2: Leadership Extraction Practices  
"Crédit EQ : matériaux faibles émissions  
Option 1 : calculs par catégorie de produit"  
MR Credit: Interiors Life-Cycle Impact Reduction  
Option 3: Design for Flexibility

3rd Party Certified in Accordance with ISO14044, ISO14025 & EN15804  
  
C2C Silver Level (Version 4.0) or HPD (Version 2.1)  
  
C2C Silver Level (Version 4.0)  
  
Environmental Guarantee: Re[turn] Reclamation Program\* | Through Our Environmental Guarantee, Shaw Pledges to Transport And Recycle Any Ecoworx Carpet.  
Certified  
  
Ecoworx Tile with Lokdots Installation System

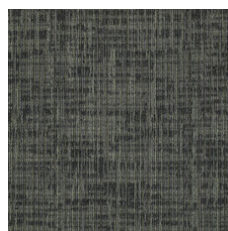
## Indice De Réflexion Lumineuse



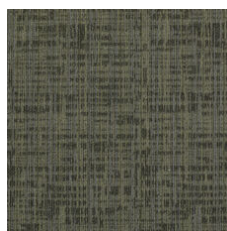
Bisque 83111  
LRV 17.7



Cork 83170  
LRV 19.5



Nuance 83314  
LRV 6.7



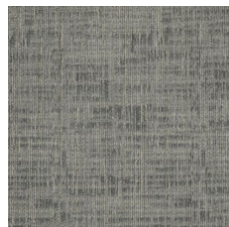
Swept 83322  
LRV 8.3



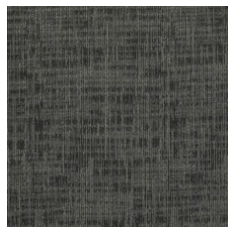
Night 83496  
LRV 3



Underground 83505  
LRV 3.7



Zinc 83515  
LRV 14.4



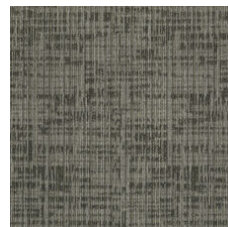
Carbon 83585  
LRV 6



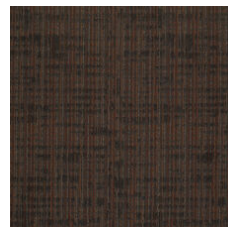
Canyon 83750  
LRV 4.5



Suede 83755  
LRV 12.3



Clay 83761  
LRV 10.6



Brazen 83803  
LRV 3.8

## Informations Supplémentaires

\* To learn more about the recyclability of our products and our re[TURN], please visit [shawcontract.com/sustainability](https://shawcontract.com/sustainability).

\*\*Meets or exceeds all local and national regulations in country of manufacture.

\*\*\*This carpet is manufactured to be ADA compliant, but to be fully ADA compliant, the end-user must ensure the carpet is adhered to the floor and installed as outlined in the ADA standards.

[Installation Guidelines](#)

[Maintenance Guidelines](#)

Specifications are subject to nominal manufacturing variance. Material supply and/or manufacturing processes may necessitate changes without notice.

This product is an exclusive design and may not be duplicated in any manner. Use of this design in the creation of another product design is also strictly prohibited.

Visit [shawcontract.com/testing](https://shawcontract.com/testing) for more information.



**PVC-Free**

Corporate Headquarters +1 800 257 7429 | +1 706 532 7984 | Atlanta +1 404 853 7429 | Bengaluru +91 80 6773 0202 | Beijing +86 10 6568 588 | Chicago +1 312 467 1331 | Dubai +971 4 584 6956 | Hong Kong +852 2623 0371 | Latin America (Miami) +1 305 827 5912 | London +44 207 961 4120 | Los Angeles +1 800 233 1614 | Melbourne +61 3 9939 8543 | Mexico City +55 5010 7600 | Mumbai +91 22 6284 5050 | Nantong +86 400 800 7429 | New York +1 212 953 7429 | Paris +33 (0) 1 81 22 44 39 | San Francisco +1 415 955 1920 | Santiago +562 2431 5000 x 550 | São Paulo +55 11 3071 1702 | Shanghai +86 21 3338 4000 | Singapore +65 6733 1811 | Sydney +1 800 556 302